

Číslo materiálu: VY 32 INOVACE 25/17

Název materiálu: Test – Animals 6 - 10

Číslo projektu: CZ.1.07/1.4.00/21.1486

Zpracoval: Jana Jourová

Test 6 – 10

1. Answer the questions:

Bats

What do the bats use echolocation for?

How do they sleep?

When do they hunt?

2. Make sentences:

Ecology

How can we save the nature?

a) USE/WATER/NEED

b) ENERGY/LIGHTBULBS

c) RECYCLE

d) GO/TO WORK/TO SCHOOL

e) AVOID/BAG

f) TURN OFF

3. Answer the questions:

Rats

What animal class do rats belong to?

Where do the rats live?

What can they do?

What materials can they destroy?

Why are they dangerous to people?

4. Choose the correct answer:

Which is the fastest land animal in the world?

- a) Cheetah b) lion c) dolphin

Which is the largest land animal in the world?

- a) Blue whale b) giraffe c) elephant

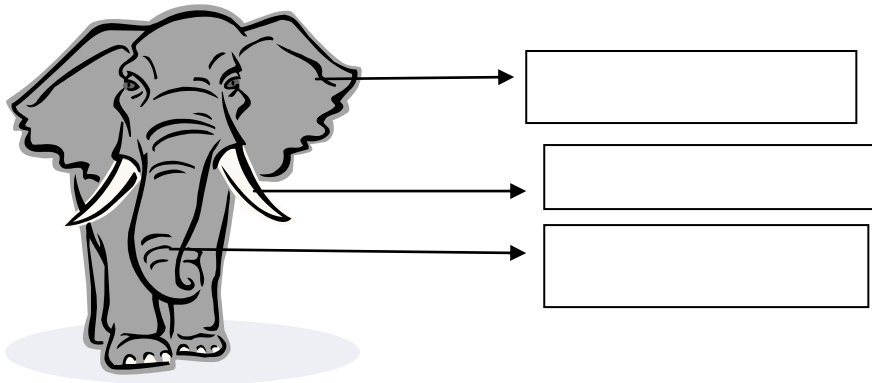
Which is the heaviest bird in the world?

- a) Ostrich b) stork peacock

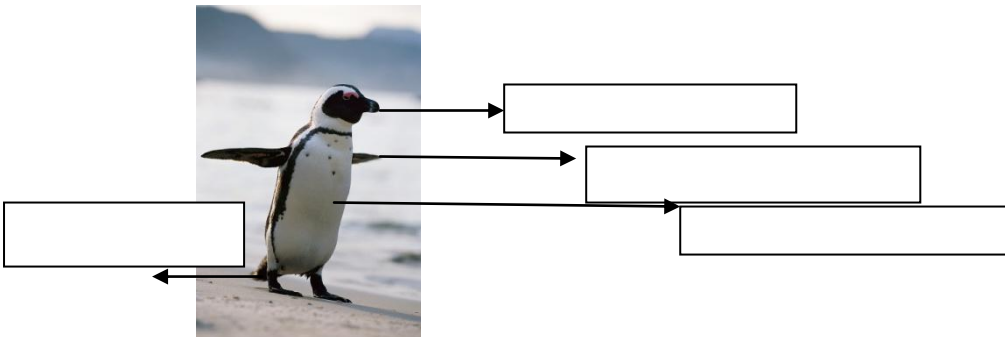
Which is the oldest living animal in the world?

- a) parrot b) tortoise c) shark

5. Describe the elephant's body:



6. Describe penguin's body



KEY - Test 6 – 10

5. Answer the questions:

Bats

What do the bats use echolocation for?

They use it to find their way and prey.

How do they sleep?

They sleep upside down in the cave.

When do they hunt?

They hunt at night.

6. Make sentences:

Ecology

How can we save the nature?

g) USE/WATER/NEED

Use only the water you need.

h) ENERGY/LIGHTBULBS

Use energy saving lightbulbs.

i) RECYCLE

Recycle glass, paper, plastic, metals etc.

j) GO/TO WORK/TO SCHOOL

Go to work and to school on foot or by bike.

k) AVOID/BAG

Avoid using plastic bags or recycle them.

l) TURN OFF

Turn off all the things you don't use.

7. Answer the questions:

Rats

What animal class do rats belong to?

They belong to the class of mammals.

Where do the rats live?

They live in all continents except the polar areas.

What can they do?

They can climb and jump.

What materials can they destroy?

They can destroy wood, plastic, metals...

Why are they dangerous to people?

Because they can transfer diseases.

8. Choose the correct answer:

Which is the fastest land animal in the world?

- a) **Cheetah** b) lion c) dolphin

Which is the largest land animal in the world?

- a) Blue whale b) giraffe c) **elephant**

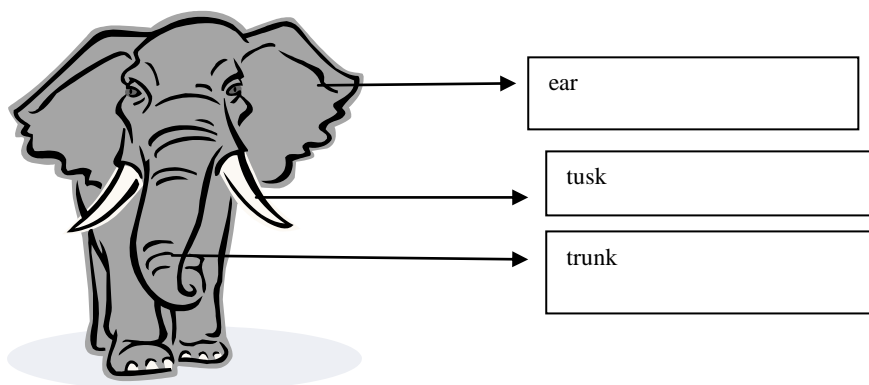
Which is the heaviest bird in the world?

- a) **Ostrich** b) stork peacock

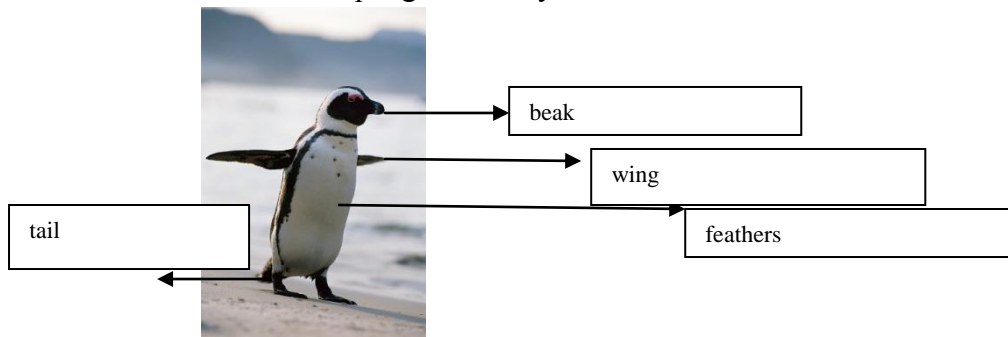
Which is the oldest living animal in the world?

- a) parrot b) **tortoise** c) shark

5. Describe the elephant's body:



6. Describe penguin's body



Bibliografie:

Všechny obrázky:

Microsoft Office, Klipart